



integra

automatización proceso

INDEX

ABOUT US

Mission and Vision

Flexibility and Compromise

Growth

SERVICES

Engineering and Industrial Consulting Firm

Automation and Control

Labelling and Traceability

Electrical Installations

Other Activities Fields

ABOUT US

VALUES

INTEGRA PROCESO Y AUTOMATION is a company which adds high quality solutions in the area of Industrial Process. We can offer the Engineering until the Installation and Start Up of the Project. We can take also the role of the leadership in a turn key project.

Our main experience is focus on the **Automation Process**, including the **Design, Installation** as the Electrical and **Traceability** projects. We want to note that we can bring different alternatives of flexible solutions to our clients.

FLEXIBILITY AND COMPROMISE

We are a serious and responsible commitments company whose main strength lies in the ability of its professionals maintaining a high degree of knowledge of computer applications and processes related to the automation of industrial plants standards.

We **support our clients** and add value to their products, as well as through the application of **new technologies for automation and electrical maintenance**, establishing profitable and continuous improvement between our company and our customer partnerships and providing services construction and engineering projects and leading-edge development at the highest level of excellence, economy and efficiency.

GROWTH

The guidelines that make the action line INTEGR A P.A. has won the recognition and trust of our customers, which now form a chosen family that are prestigious industrial firms. They are the best testimony of his good service and forwards them as a further guarantee to present.

From our origin in 2005 until the real present, we have kept a constant growth in all the company aspects as clients, employees, projects. And we have fixed this growth as an essential commitment in our firm.

Our main goal is to be a strategic partner for our clients. Serve them adding value to keep us growing.

SERVICES

Engineering and Industrial Consulting Firm

Integra P.A. offers different solutions adapted to the real client needs. We can always offer the turn key leadership project.

We differ our business in two fields: Industrial Process Installations and Packaging Installations.

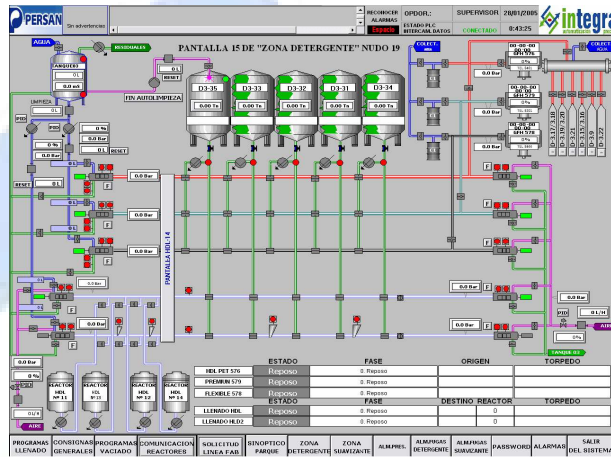
Our experience in industrial processes offers a big range of solutions as the next:

Design, calculation, automation and installation of:

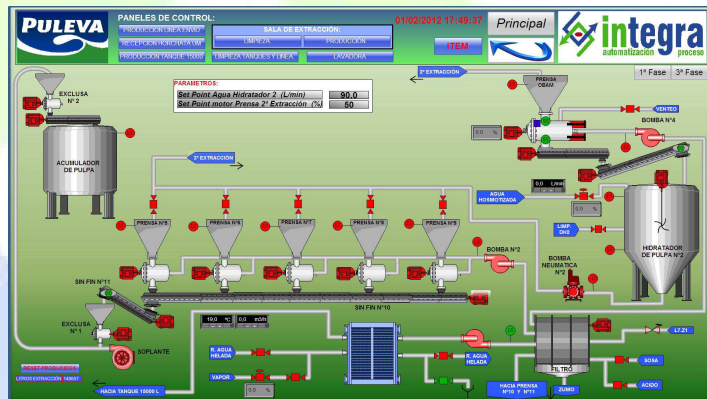
- **Units for cleaning / sterilization** in situ CIP / SIP
- Units for **production** and reception, storage, mixing, dosing, processing and dispensing of product.
- **Pasteurizers and sterilizers**
- Manifold or **matrix food aseptic** valves.
- Processes and **Aseptic Tanks**
- Microfiltration, ultrafiltration and nanofiltration
- **Systems "pigging"** for product recovery pipelines
- **Installation and dismantling** of process's equipment.

Examples of Synoptic Installations:

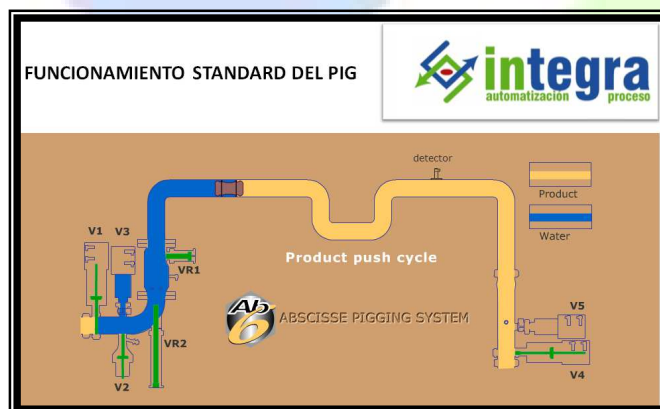
- Panel Control:
Product Dosing



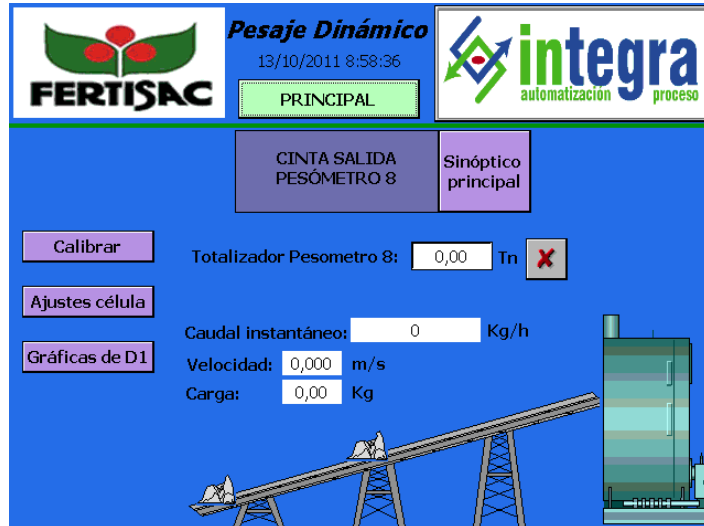
- Panel Control:
Solid Dosing



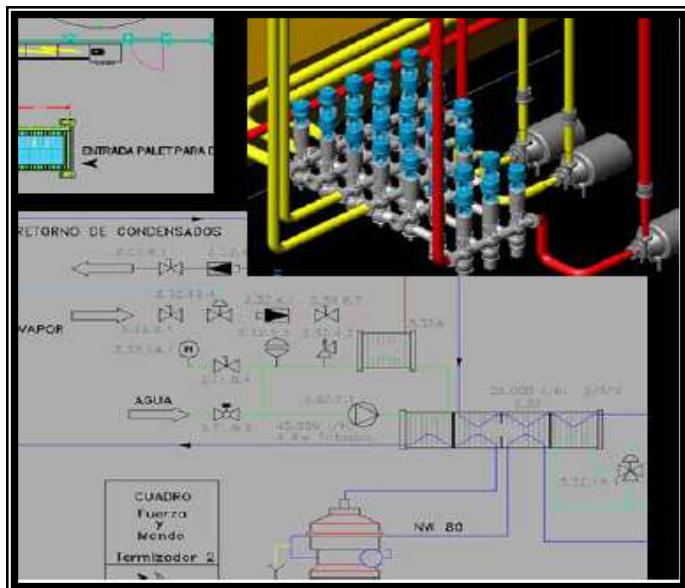
- Panel Control:
Pigging System



- Panel Control: Weight Control

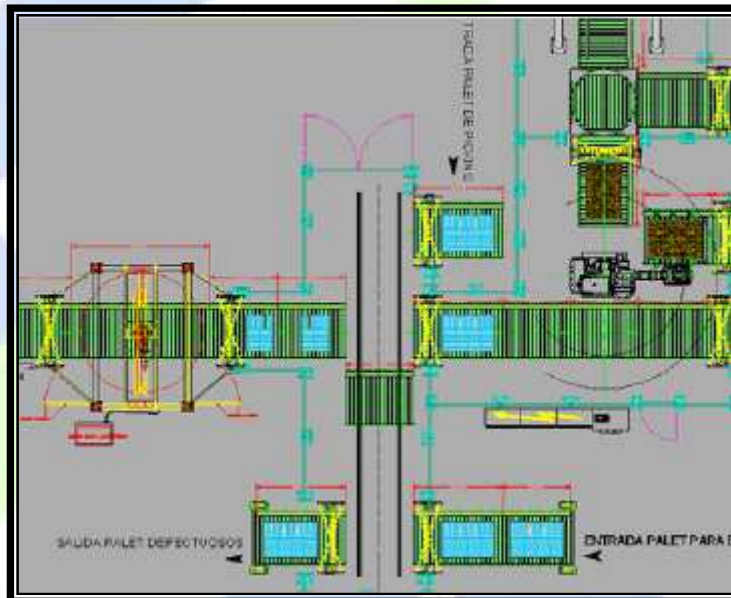


- Panel Control: Manifold



Our experience in *Packaging Installations* offers a range variety of solutions as the next:

- Design, installation and start-up of packaging equipments.
- **Installation and dismantling of** bottling lines.
- **Migration of machinery** with obsolete control hardware (palletizer, pallet stretch wrapper, pasteurizers, etc...)
- **Pallet Labellers Constructors**

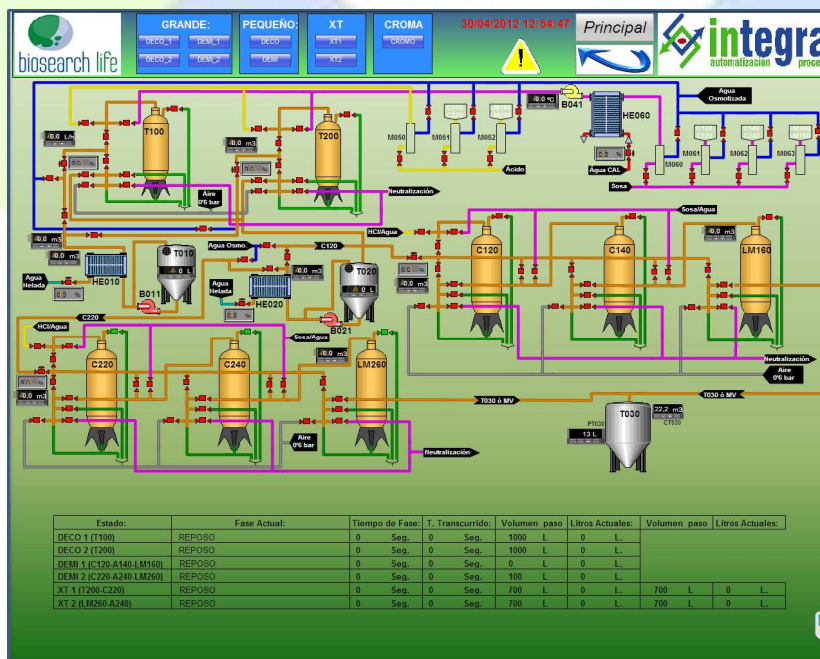
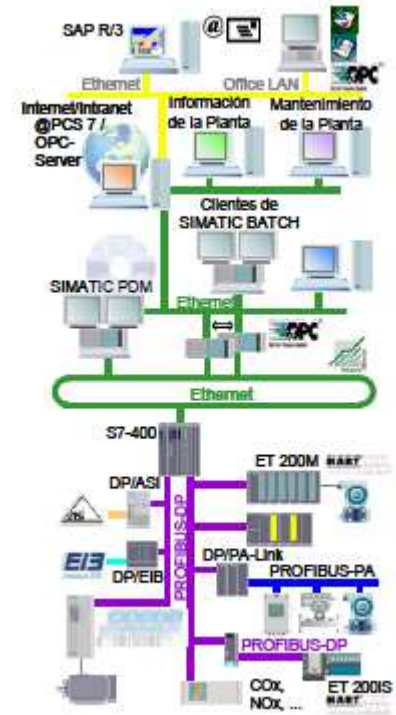


In these activities, Grupo Integra constructs, designs and makes the installation of all the electrical installations of low (power, control and lighting) as electrical cabinets, switch boards...



Automation y control

- Automation and Based control processes in the **PLC's standards** of world leaders in the field of automation.
- Design, programming and **network communication** configuration (**Ethernet, PROFIBUS, AS-i, Wireless, radio, GSM, etc..**)
- Software **monitoring, control and process** monitoring systems HMI. (Commercial Scadas, WinCC, Intouch, iFix, etc.).
- Distributed Control Systems.**
- System data collection, management control and **product traceability.**



- **Migration of systems** and hardware production lines to latest technology software
- **Remote control and remote monitoring** of geographically dispersed systems, using the most advanced distributed control techniques and the best needed telecommunications systems..



- Preventive and corrective **maintenance**, 24-hour telephone support.

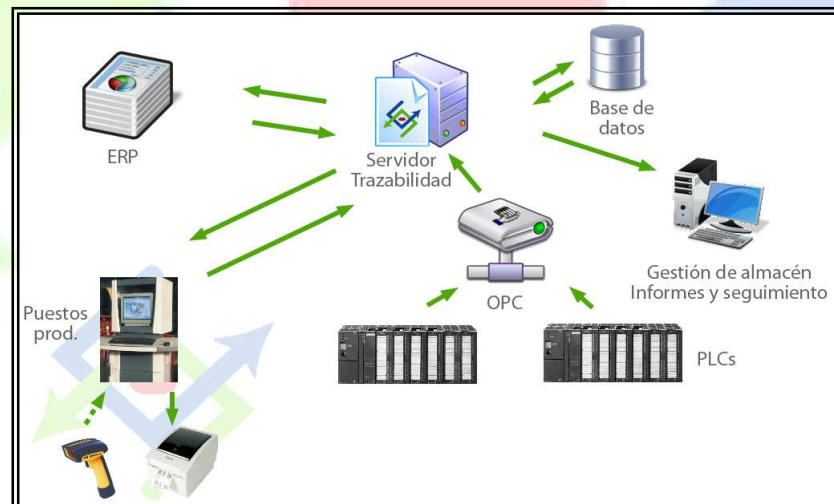
Labelling and Traceability

From 2012 we are pallet labellers constructors of high trend.

The labeller pallet construction is a clear example of the goals assumed and achieved for our firm. Grupo Integra has been making Traceability systems not only to collect data of the process, but to focus on the continuous improvement.

Consequently from 2012 we are pallet labellers constructors and we can manage all the Traceability cycle of your product.

- **Traceability Process Software.**
- Design and configuration of **manufactures industrial networking, remote communications** online.



Electrical Installations

INTEGRA makes all kind of **electrical installations of low and medium voltage both public works and private, working with premier builders.**

- Installation and **assembly of transformer:** prefabricated elements, underground and maintenance thereof



- Installing **lines both low and medium voltage** overhead and underground

- Electrical systems and telecommunications **within commercial and industrial buildings.**



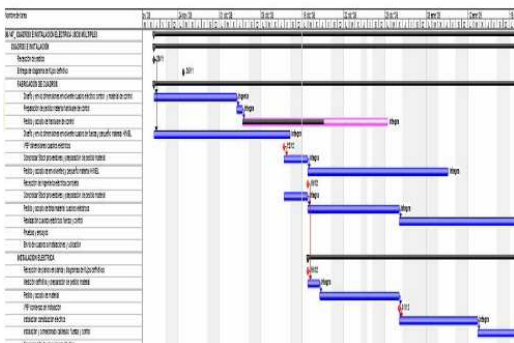
- Installation of **street lighting and interior lighting for private work.**



- Construction of all type of electrical cabinets
- Commissioning and verification tests (Megger, hi-pot).
- Training of technical staff of the client for new installations.

INTEGRA develops projects at all levels: **Basic Project, Execution Project and Detail Engineering..**

Furthermore, we deal with the preparation of all documentation which may be part of the project, such as: descriptive qualities and memories, compliance, structural study, graphic documentation, measurement and budgeting, work plan, health and safety study, plan maintenance, environmental study, project activities, management license application, etc.. We can highlight:



Project and technical divisions into low, medium and high voltage electrification.

- Projects and Technical Divisions Centers transformation.
- **Safety certifications** in machines according to **RD 1215/97**
- Projects and techniques fluids and **energy services directions**

Projects and infrastructure facilities. (street lighting, housing developments, etc..).

Projects and technical **divisions of fire in buildings and industries.**

Projects and technical divisions **of thermal and photovoltaic renewable energy**

Other Activities Fields

Remote control systems: pumping management, Irrigation Communities, etc

• INTEGRÁ develops remote control systems **via wire or radio capable of managing pumping installations, irrigation networks, water supply, etc.**, in order to provide, first, a historical performance data, and second to establish alarm systems to detect immediately any incident in real time. The remote control system will communicate via GSM to the central office, which will store the basic operating parameters. Another function to be performed by these remote stations will be to send SMS to the staff or technical staff on duty in the case of an incident so an action can be taken immediately, and thus avoid or minimize the effects of any damage or leakage

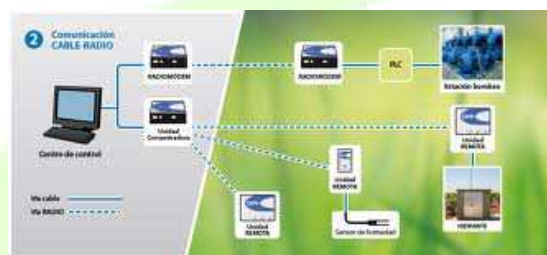


Software de gestión

Mediante la implantación de este software se puede llevar a cabo la gestión integral de una o varias comunidades de regantes, evitando que el gestor tenga que utilizar varias herramientas para ello (hojas de cálculo, bases de datos, fichas, etc.) como venían haciendo hasta ahora muchas comunidades.

El programa incluye los siguientes módulos:

- Gestión de comuneros, parcelas y cultivos
- Gestión de redes de distribución del agua: **consumos, peticiones de agua,** etc
- Control de **pagos y facturación**
- Análisis y listados de **informes**
- **Conexión** con sistema de telecontrol de forma **remota**



Energy Audits

- INTEGRA offers **Energy Audits** to identify and evaluate opportunities for saving in each building in a personalized way, prioritizing them according to their efficiency and payback period of investment to make.



- Other benefits achievable for the building or factory audited are



Cost savings due to the incorporation of more efficient modern systems, representing a reduction of energy expenditure since put in place facilities.

- Increase lifetime of facilities and equipment, since work is secured in the most suitable conditions, avoiding oversizing or overloads. perform.

- Improving the competitiveness of the facility by reducing production costs.
- Improving the image of the facility, contributing to social welfare and respect for the environment by reducing CO2 emissions and rational use of energy.



IDENTIFICATION DATA

Name:

INTEGRA PROCESO Y AUTOMATIZACIÓN S.L.

Address:

C/ Paseo del Charcón nº 22

18110 Las Gabias

Granada

C.I.F.:

B18722470

Telephone:

+34 958 55 37 86 / +34 958 48 81 46

Fax:

+34 958 48 81 51

E-MAIL

info@grupointegra.com.es

WEB

www.grupointegra.com.es

REFERENCES



Alucoat
Grupo Almería

Expertos en el lacado e impresión de aluminio.



PULEVA





GAMPACK



twin pack®



FlexLink®



STORK®



Abbott
A Promise for Life



JGC



Sierra
Cazorla
Agua Mineral Natural



Reny Picot®



Juver



Y
YBARRA



Plásticos
ANDALUCÍA



SPB



MIGASA
GRUPO



AIRZONE



ferrovial
Infraestructuras inteligentes

 **TALLERES OBAM**

Radar
process



CRESPO Y BLASCO
GDF SVEZ

